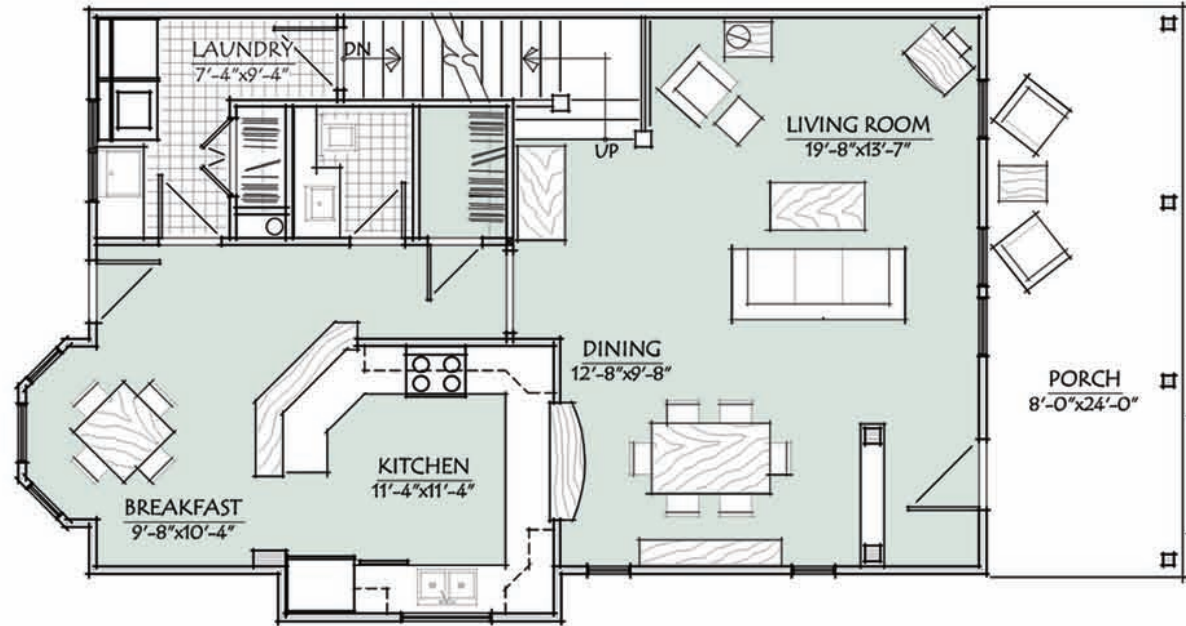
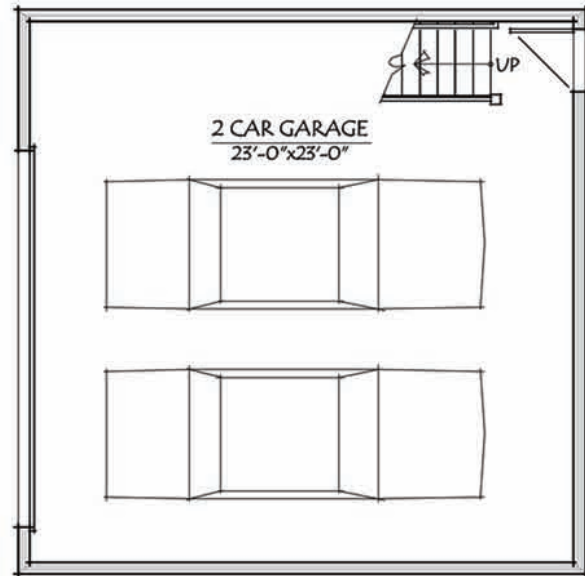
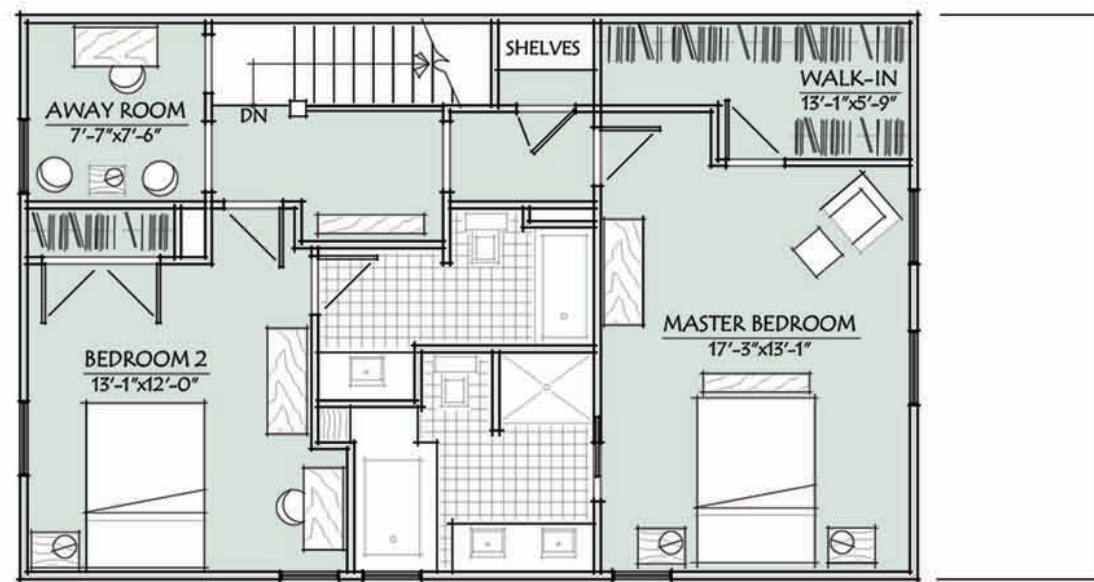
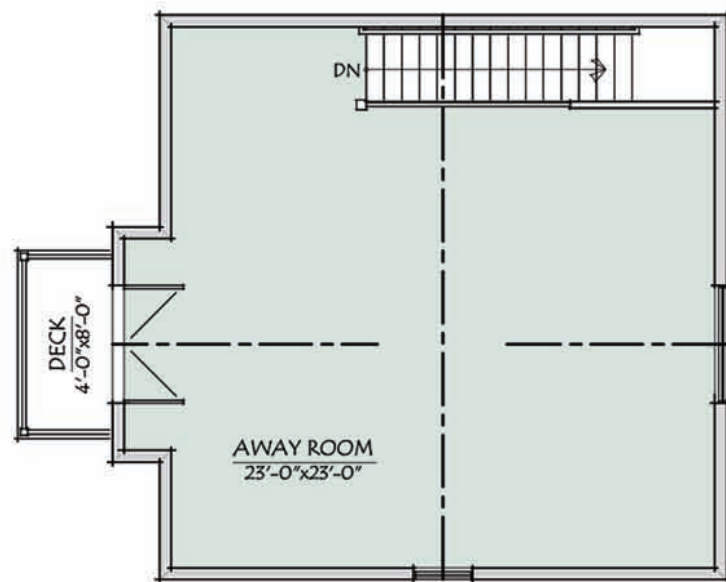


THE MUSTILL CITY HOMES



FIRST FLOOR	956 S.F.
GARAGE	576 S.F.
LIVING ROOM:	19'-8" x 13'-7"
DINING ROOM:	12'-8" x 9'-8"
KITCHEN:	11'-4" x 11'-4"
BREAKFAST NOOK:	9'-8" x 10'-4"
LAUNDRY ROOM:	7'-4" x 9'-4"
GARAGE:	23'-0" x 23'-0"



SECOND FLOOR	865 S.F.
AWAY LOFT	536 S.F.
MASTER BEDROOM:	17'-3" x 13'-1"
BEDROOM 2:	13'-1" x 12'-0"
AWAY ROOM:	7'-7" x 7'-6"
AWAY LOFT:	23'-0" x 23'-0"

TOTAL: 2,357 S.F.



HICKORY

JOHN D. TOOMEY



ARCHITECT